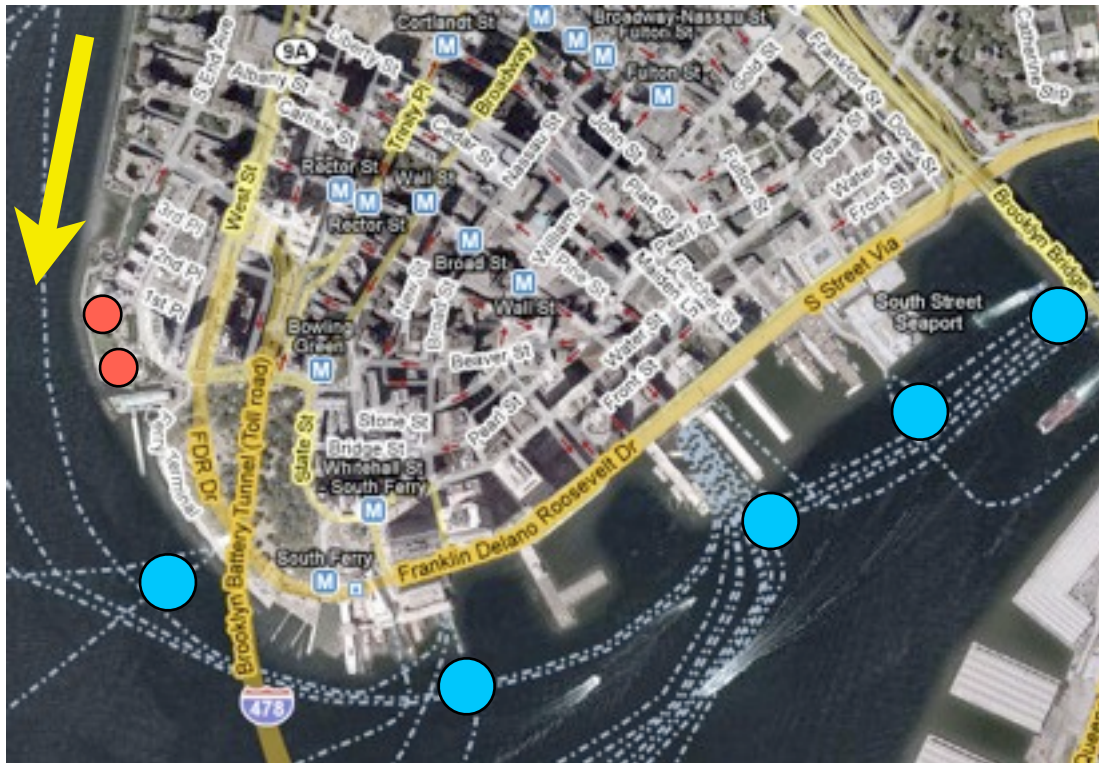


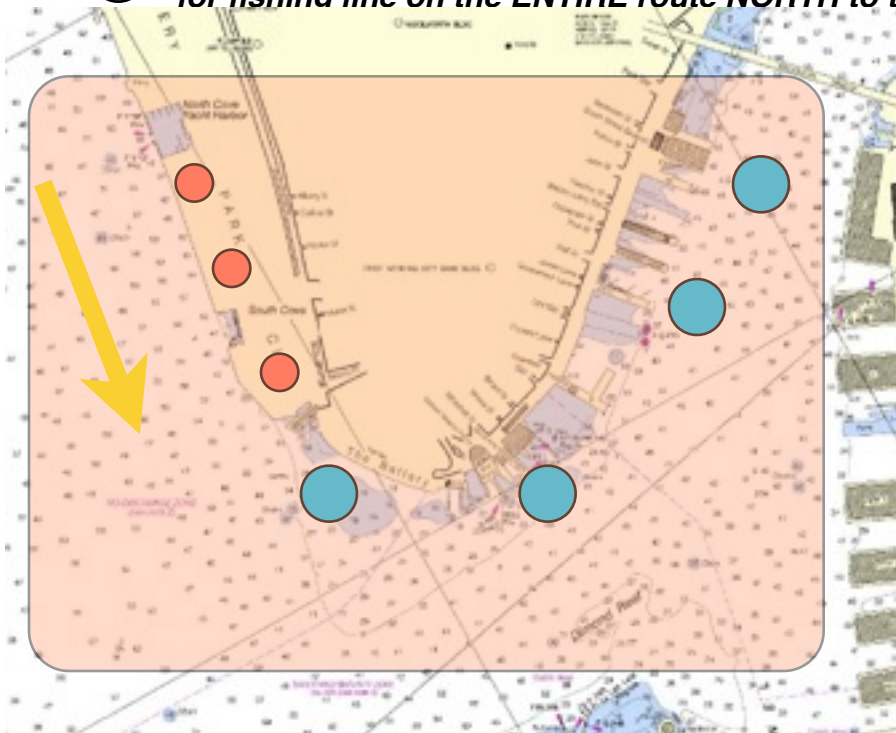
THE BATTERY



● These **BLUE** bullets mark very active passenger ferry terminals and safety concerns. Watch for wakes, criss-crossing routes along with quick entries and exits at the dock.

↓ The **YELLOW** arrow indicates that the current on the Hudson is traveling south for your last 1.5 miles.

● These **RED** bullets mark very active **FISHING AREAS!** Watch out for fishing line on the **ENTIRE** route **NORTH** to the finish.



The Battery is the **TOUGHEST** part of the course. It is the last few miles of the race (**FATIGUE**) and it has the choppiest confused waters (**5 TO 6 FOOT CHOP**) with the most commercial traffic and exposure to building current against you.