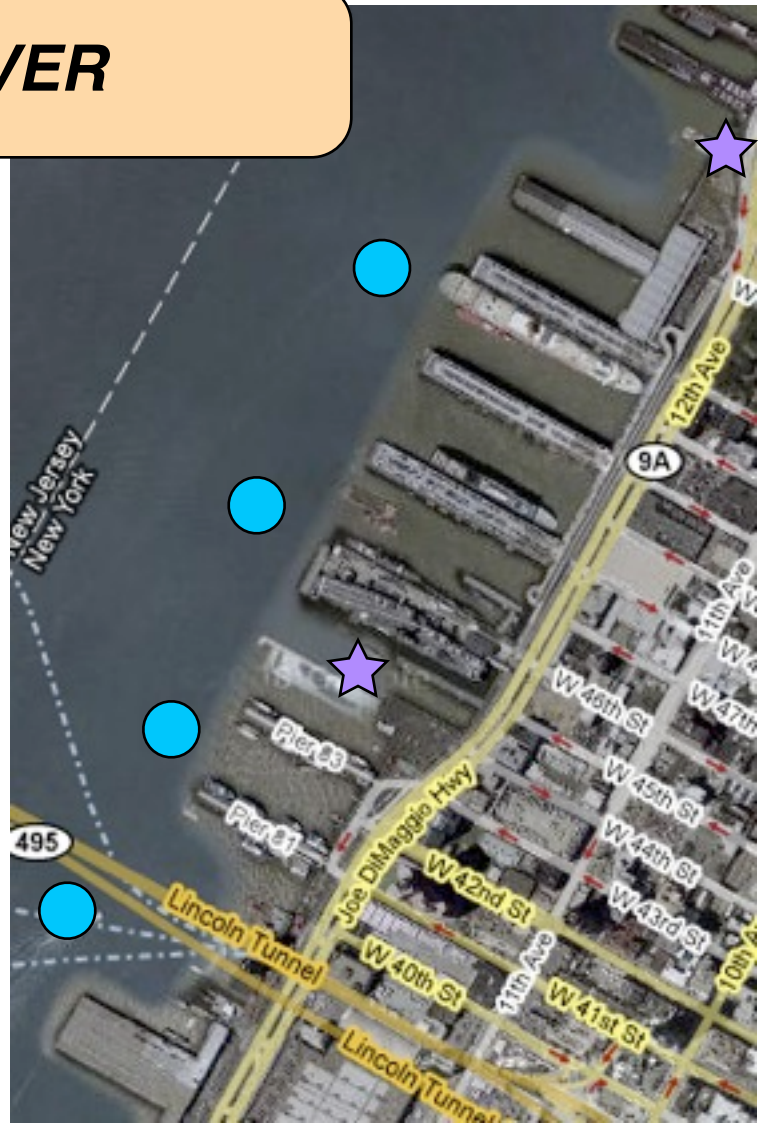
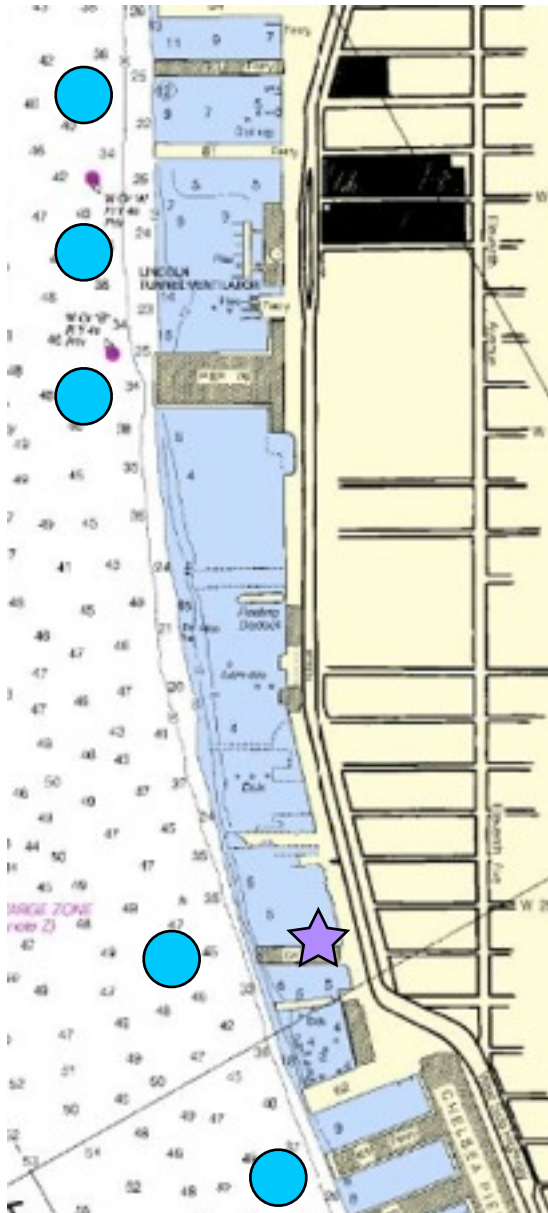


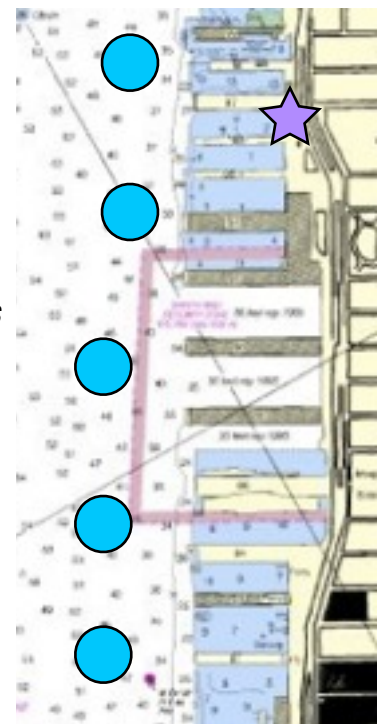
# HUDSON RIVER

## Commercial Piers

Pier 79, 81, 83 etc. - NY Waterway Ferry, Circle Line, Carnival Cruise Ships. Commercial boats, passenger ferry terminal and tourists boats of all shapes and sizes launch from these Piers.

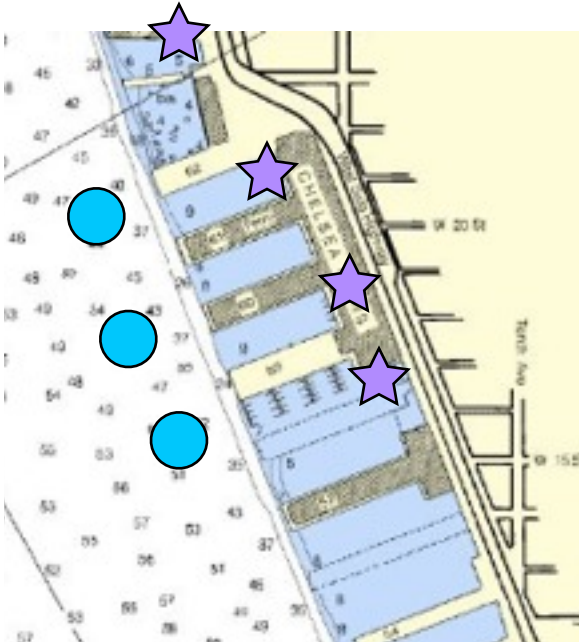


These BLUE bullets mark very active passenger ferry terminals and safety concerns. Watch for wakes, criss-crossing routes along with quick entries and exits at the docks and out of the embayments



## Chelsea Piers

Recreational boats along with passenger ferry terminal and tourists boats of all shapes and sizes launch from these Piers.



Keep in mind passenger vessel traffic will be approaching each of these locations from both the North and South.

You must give the Piers & Berths at least 50 yards but preferably 75 to 100 yards.

**This does not give you permission to be in the shipping lane. STAY OUT OF THE MIDDLE OF THE RIVER!**



**RACE COURSE**



**MIDDLE OF RIVER**

